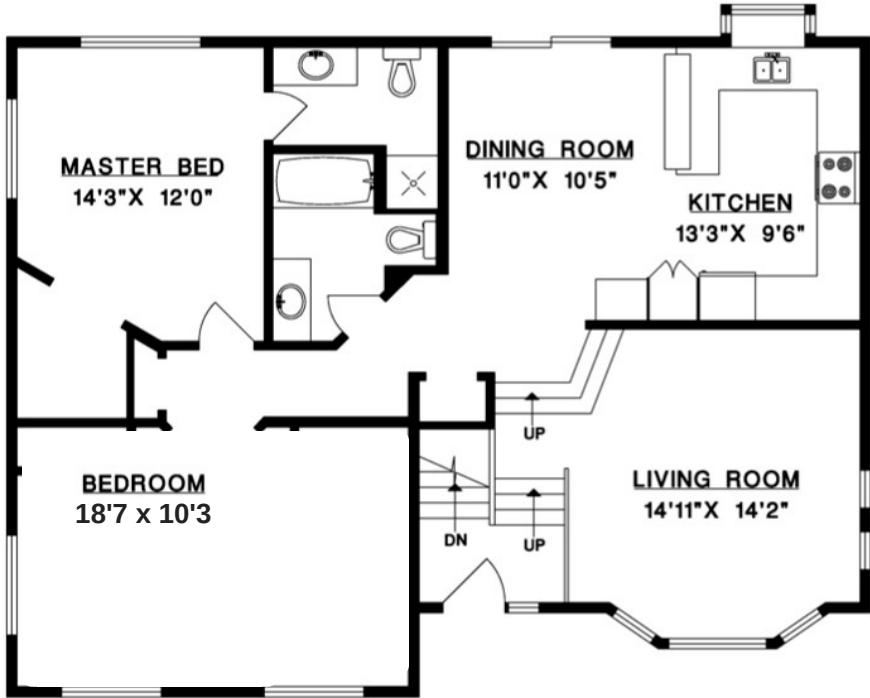


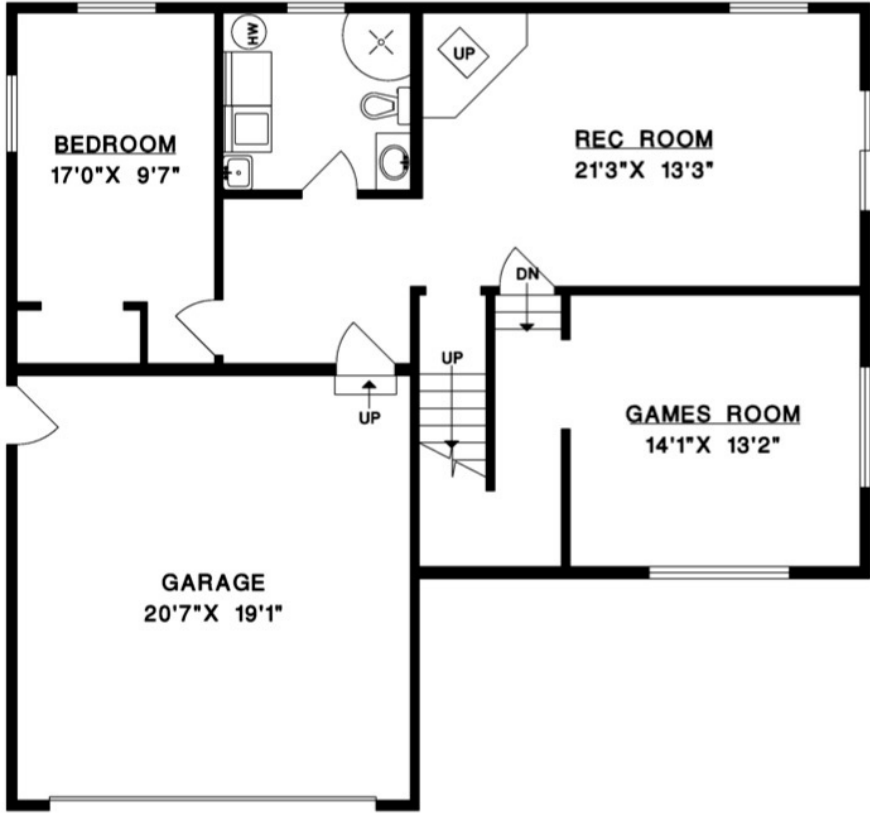


**962 WINDJAMMER ROAD  
BOWEN ISLAND**

MAIN FLOOR	1,267 SQ.FT.
LOWER FLOOR	978 SQ.FT.
<b>TOTAL</b>	<b>2,245 SQ.FT.</b>
GARAGE	418 SQ.FT.



**MAIN FLOOR**



**LOWER FLOOR**

