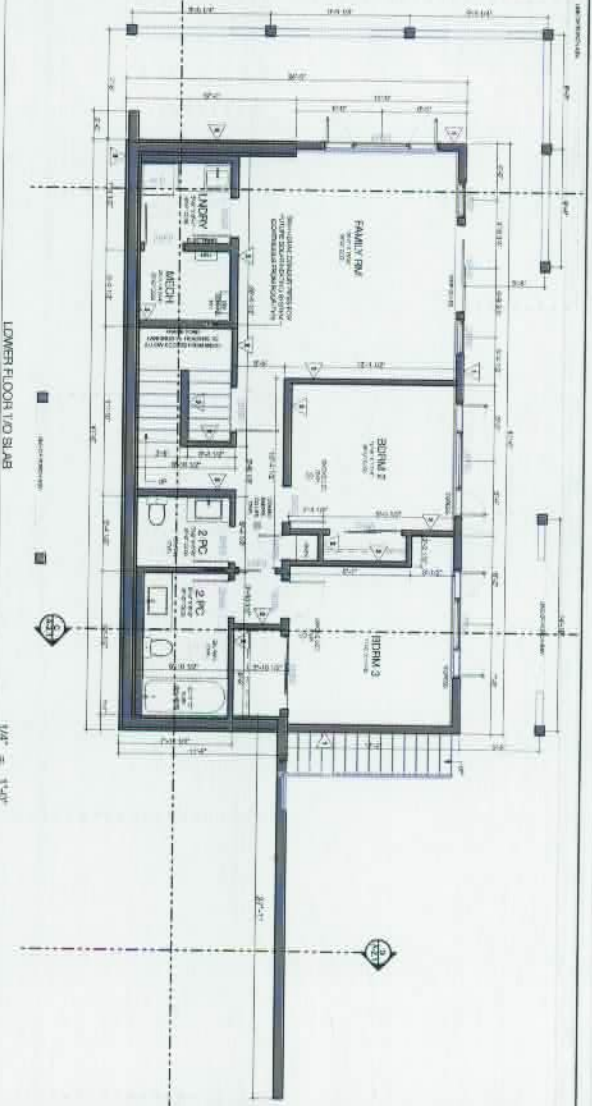
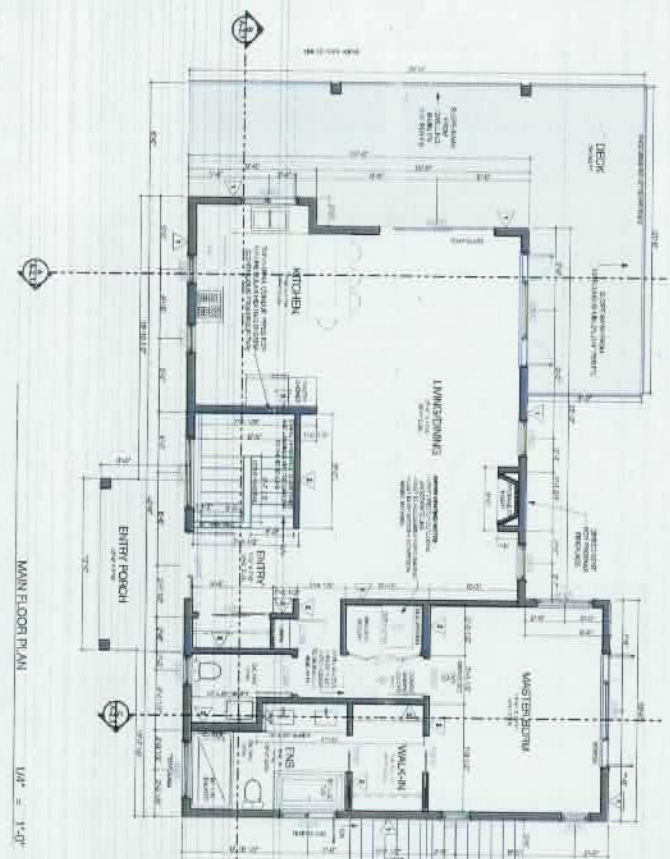


VENTILATION
 ALL VENTILATION IS TO COMPLY WITH ALL APPLICABLE LOCAL, STATE AND FEDERAL REQUIREMENTS. ALL VENTILATION SHALL BE PROVIDED BY MEANS OF MECHANICAL EXHAUST SYSTEMS. MECHANICAL EXHAUST SYSTEMS SHALL BE PROVIDED BY MEANS OF MECHANICAL EXHAUST SYSTEMS. MECHANICAL EXHAUST SYSTEMS SHALL BE PROVIDED BY MEANS OF MECHANICAL EXHAUST SYSTEMS.

CONTINUOUS AIR BARRIER
 ALL CONTINUOUS AIR BARRIERS SHALL BE PROVIDED BY MEANS OF MECHANICAL EXHAUST SYSTEMS. MECHANICAL EXHAUST SYSTEMS SHALL BE PROVIDED BY MEANS OF MECHANICAL EXHAUST SYSTEMS. MECHANICAL EXHAUST SYSTEMS SHALL BE PROVIDED BY MEANS OF MECHANICAL EXHAUST SYSTEMS.

NOTES
 ALL FINISHES TO BE PROVIDED BY THE CONTRACTOR. ALL FINISHES SHALL BE PROVIDED BY THE CONTRACTOR. ALL FINISHES SHALL BE PROVIDED BY THE CONTRACTOR. ALL FINISHES SHALL BE PROVIDED BY THE CONTRACTOR.



CONSTRUCTION ASSEMBLY SCHEDULE

- 1. 2 1/2" EXTENSION WALL
- 2. 2 1/2" INTERIOR PARTITION
- 3. 2 1/2" INTERIOR PARTITION
- 4. FLOOR ASSEMBLY A
- 5. FLOOR ASSEMBLY B
- 6. FLOOR ASSEMBLY C
- 7. POOR FLOOR ASSEMBLY
- 8. REINFORCED CONCRETE FLOOR
- 9. REINFORCED CONCRETE FLOOR
- 10. REINFORCED CONCRETE FLOOR
- 11. REINFORCED CONCRETE FLOOR
- 12. REINFORCED CONCRETE FLOOR
- 13. REINFORCED CONCRETE FLOOR
- 14. REINFORCED CONCRETE FLOOR

807 PROJECT LANE
 PROJECT NO. 12345
 LOWER & MAIN FLOOR
 DATE: 12/15/2023
 DRAWN BY: J. SMITH
 CHECKED BY: M. JONES
 SCALE: AS SHOWN

AMT ADAMS
 ARCHITECTS