

**449 Bowen Trunk Rd.
Bowen Island, BC**

Main Floor

Restaurant: 1,292 sq. ft.
Shop: 113 sq. ft.
Office: 143 sq. ft.
Total: 1,548 sq. ft.

Leasable Floor Area

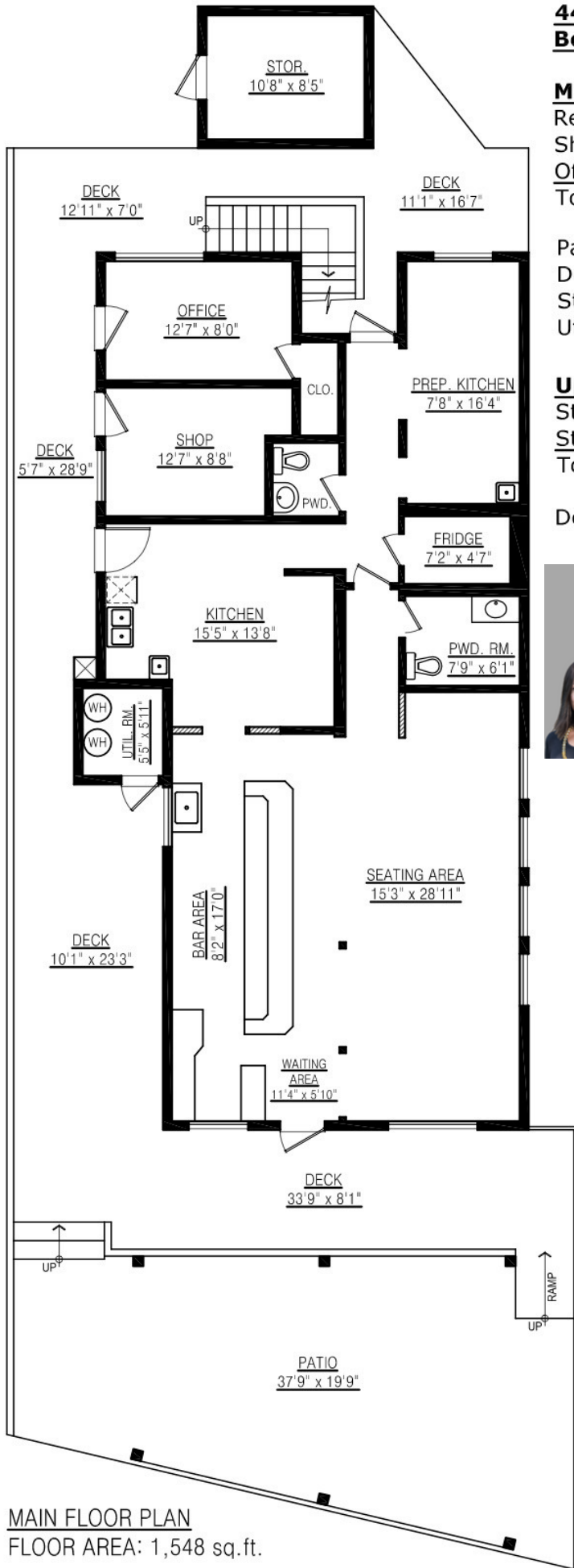
Restaurant: 1,201 sq. ft.
Shop: 99 sq. ft.
Office: 118 sq. ft.
Total: 1,418 sq. ft.

Patio: 617 sq. ft.
Deck: 1,001 sq. ft.
Stor.: 113 sq. ft.
Util.: 40 sq. ft.

Upper Floor

Studio 'A' 266 sq. ft.
Studio 'B' 228 sq. ft.
Total: 494 sq. ft.

Deck: 358 sq. ft.

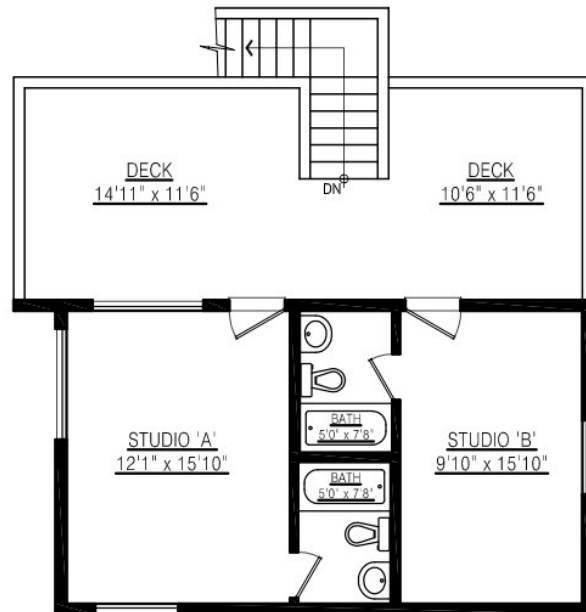


MAIN FLOOR PLAN
FLOOR AREA: 1,548 sq.ft.

Frances Frost & Felicity Buskard



604. 947. 9090
RE/MAX Crest - Bowen Island
BowenIslandRealEstate.info

UPPER FLOOR PLAN
FLOOR AREA: 494 sq.ft.

