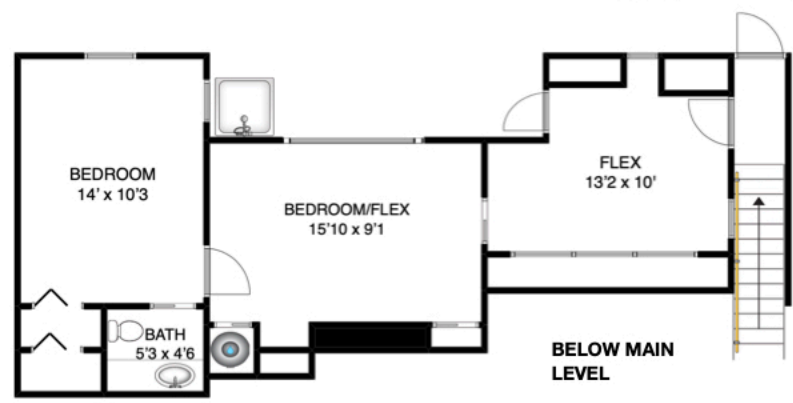


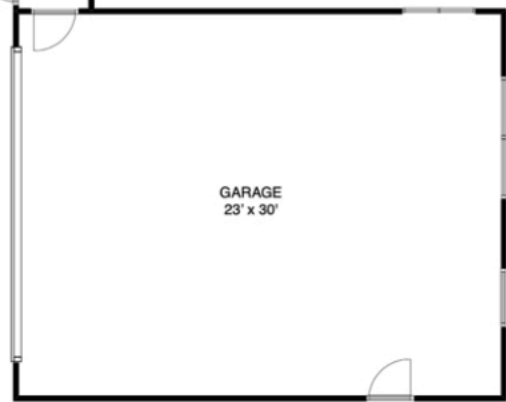
**MAIN LEVEL**



**ABOVE MAIN LEVEL**



**BELOW MAIN LEVEL**



**THE BOWEN ISLAND REAL ESTATE GROUP**  
**FRANCES FROST**  
PERSONAL REAL ESTATE CORPORATION  
 bowenislandrealestate.info  
 604.947.9090  
 #3 - 479 Bowen Trunk Rd.  
 Bowen Island

**ADDRESS**  
**584 HOLDINGS ROAD**  
**BOWEN ISLAND**  
**BC**  
**VON 1G1**

<b>AREA CALCULATION</b>	
MAIN LEVEL:	1630 sqft
ABOVE MAIN LEVEL:	460 sqft
BELOW MAIN LEVEL:	600 sqft
<b>TOTAL FINISHED SQFT:</b>	<b>2690 sqft</b>

**NOTES**

FLOOR PLAN MEASUREMENTS, DIMENSIONS, SQUARE FOOTAGE, EXISTING STRUCTURES & FEATURES ARE APPROXIMATIONS AND FOR ILLUSTRATIVE PURPOSES ONLY. WE MAKE NO GUARANTEE, EXPRESSED OR IMPLIED, AS TO THE ACCURACY AND COMPLETENESS OF THIS RENDERING.