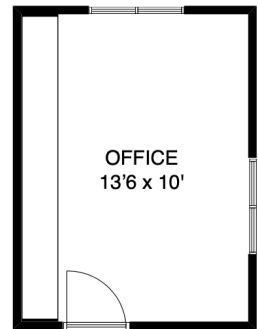
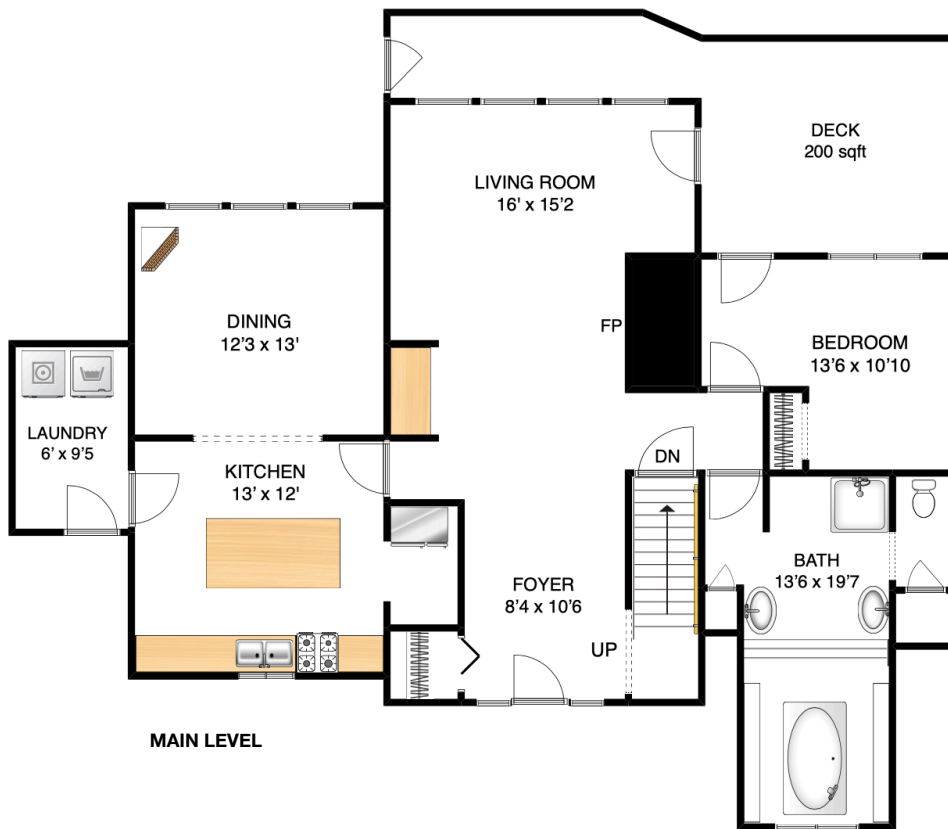


BELOW MAIN LEVEL



BELOW MAIN LEVEL



THE BOWEN ISLAND
REAL ESTATE GROUP
FRANCES FROST
PERSONAL REAL ESTATE CORPORATION
bowlislandrealestate.info
604.947.9090
#3 - 479 Bowen Trunk Rd.
Bowen Island

ADDRESS
**342 CREEK ROAD
BOWEN ISLAND
BC
VON 1G1**

AREA CALCULATION

MAIN LEVEL:	1365 sqft
ABOVE MAIN LEVEL:	865 sqft
BELOW MAIN LEVEL:	455 sqft
TOTAL FINISHED SQFT:	2685 sqft

NOTES

FLOOR PLAN MEASUREMENTS, DIMENSIONS, SQUARE FOOTAGE, EXISTING STRUCTURES & FEATURES ARE APPROXIMATIONS AND FOR ILLUSTRATIVE PURPOSES ONLY. WE MAKE NO GUARANTEE, EXPRESSED OR IMPLIED, AS TO THE ACCURACY AND COMPLETENESS OF THIS RENDERING.