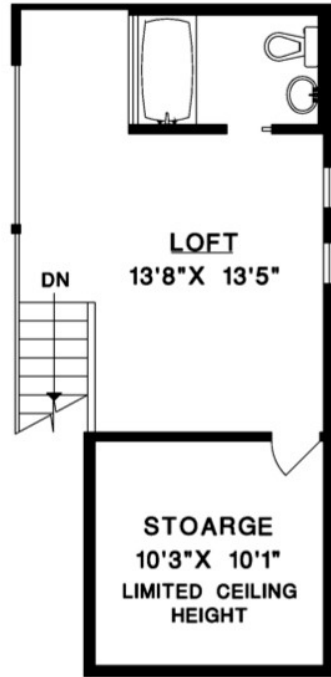


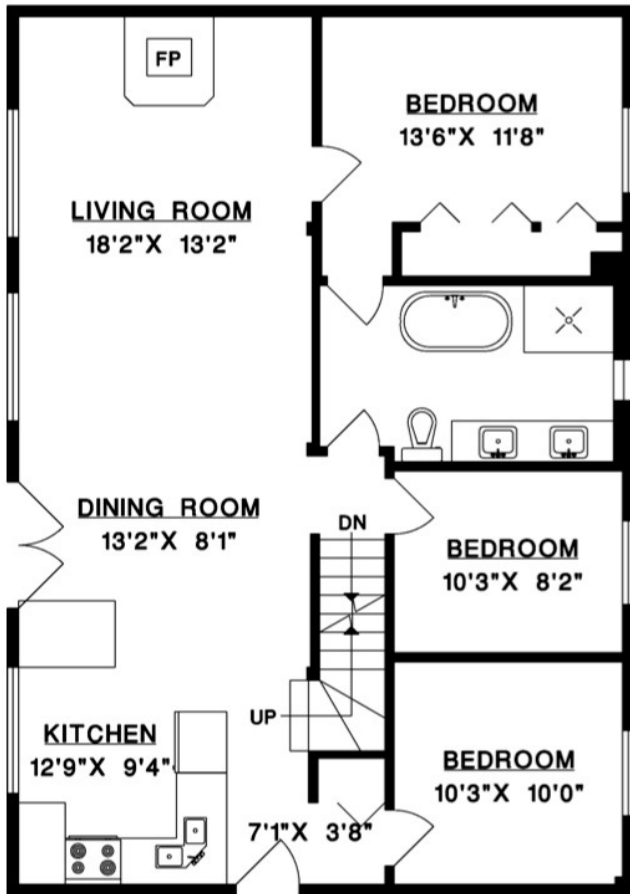


268 JASON ROAD BOWEN ISLAND

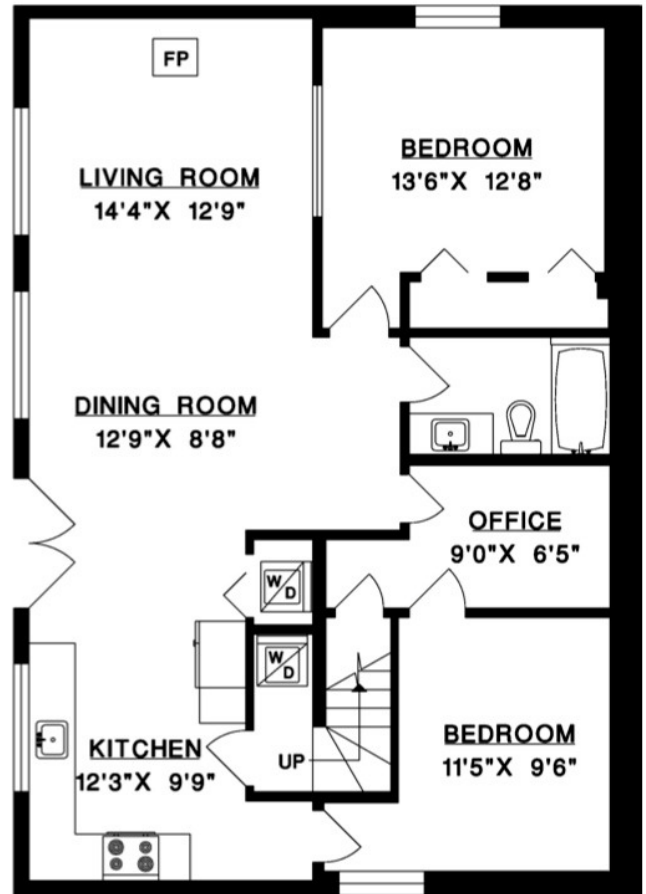
MAIN FLOOR	1,124 SQ.FT.
UPPER FLOOR	278 SQ.FT.
LOWER FLOOR	1,124 SQ.FT.
TOTAL	2,526 SQ.FT.
STORAGE	120 SQ.FT.



UPPER FLOOR



MAIN FLOOR



LOWER FLOOR

