

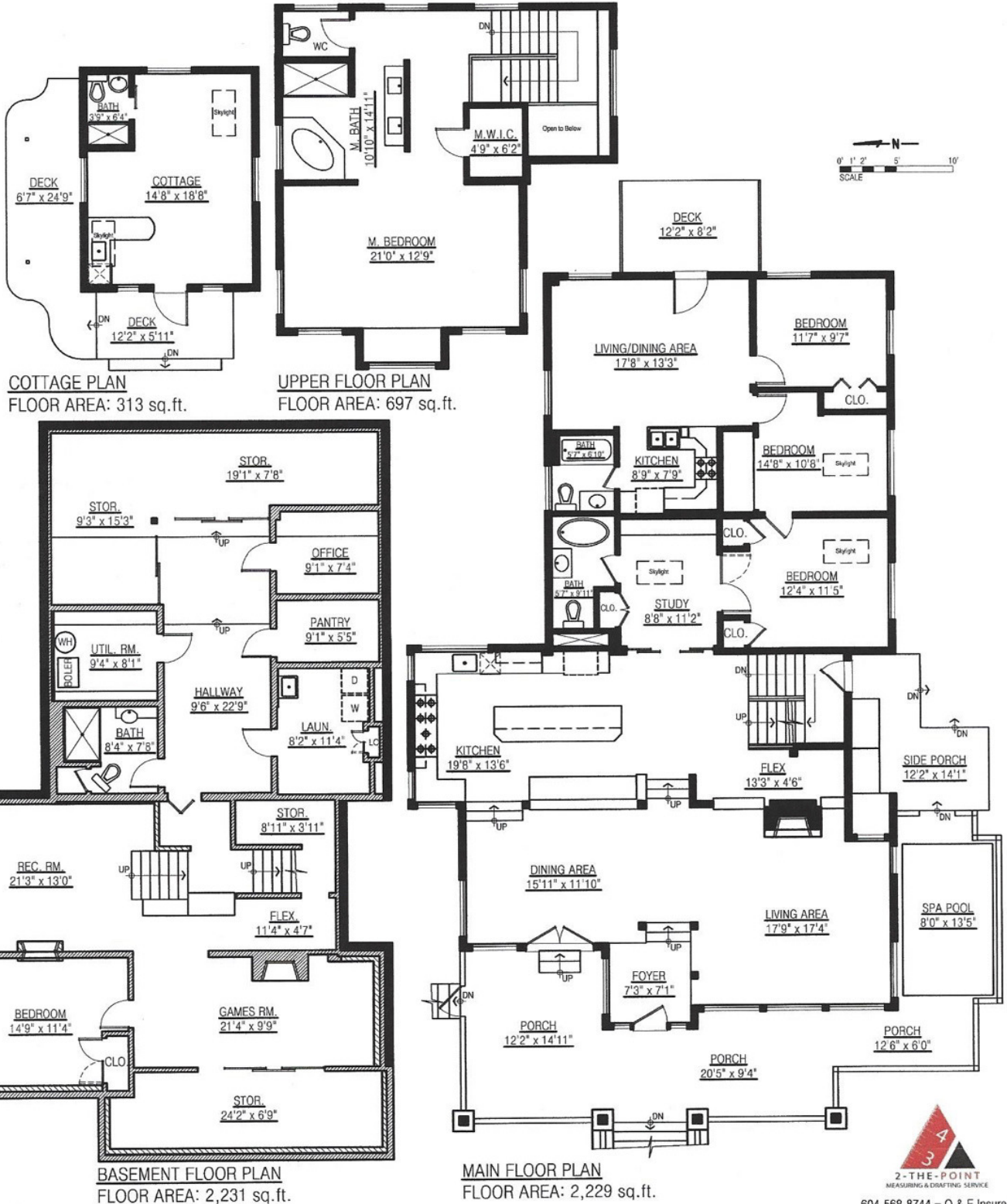


BOWEN ISLAND

REAL ESTATE

1727 Bowen Bay Rd.
Bowen Island, BC

Basement Floor:	2,231 sq. ft.	Porch:	727 sq. ft.
Main Floor:	2,229 sq. ft.	Deck:	102 sq. ft.
Upper Floor:	697 sq. ft.	Cottage Deck:	214 sq. ft.
Cottage:	313 sq. ft.		
Total:	5,470 sq. ft.		

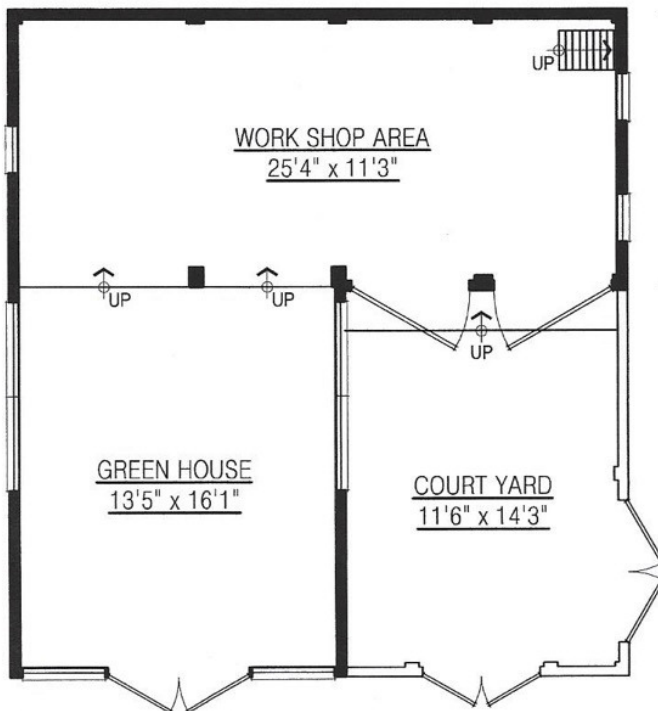




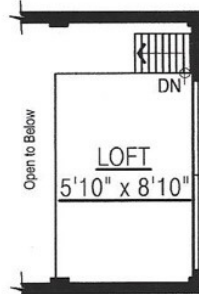
BOWEN ISLAND
REAL ESTATE

1727 Bowen Bay Rd. / Outbuildings
Bowen Island, BC

Green House/		Storage Shed:	27 sq. ft.
Workshop:	543 sq. ft.	Garden Shed:	59 sq. ft.
Loft:	52 sq. ft.	Zen Deck:	84 sq. ft.
Court Yard:	195 sq. ft.	Chicken Coop:	241 sq. ft.
Gazebo Deck:	88 sq. ft.	Tool Shed/Stor.:	196 sq. ft.



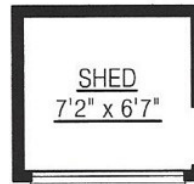
GREEN HOUSE
FLOOR AREA: 543 sq.ft.



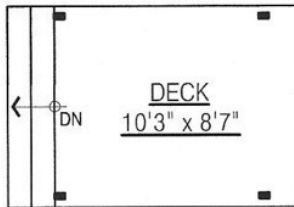
LOFT
FLOOR AREA: 52 sq.ft.



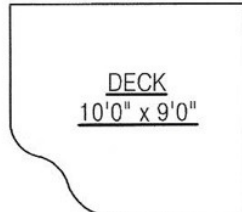
STORAGE SHED
FLOOR AREA: 27 sq.ft.



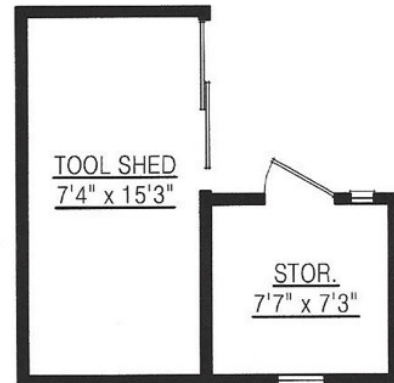
GARDEN SHED
FLOOR AREA: 59 sq.ft.



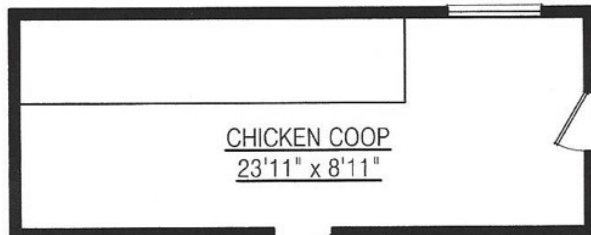
GAZEBO DECK
FLOOR AREA: 88 sq.ft.



ZEN DECK
FLOOR AREA: 84 sq.ft.



TOOL SHED / STOR.
FLOOR AREA: 196 sq.ft.



CHICKEN COOP
FLOOR AREA: 241 sq.ft.

