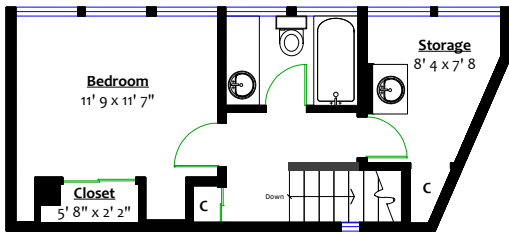


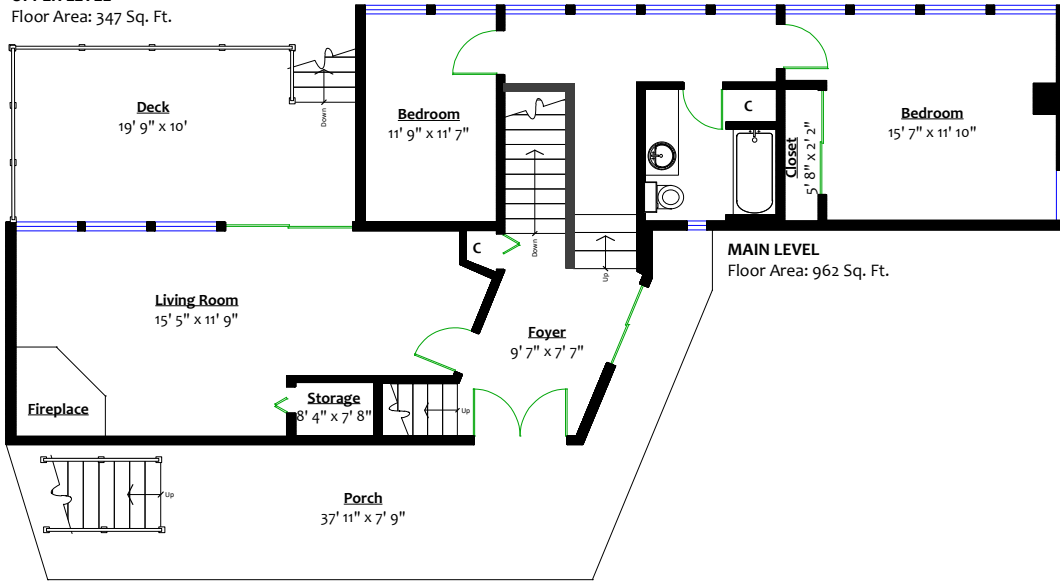
1710 Woods Road, Bowen Island, B.C.

Totals**

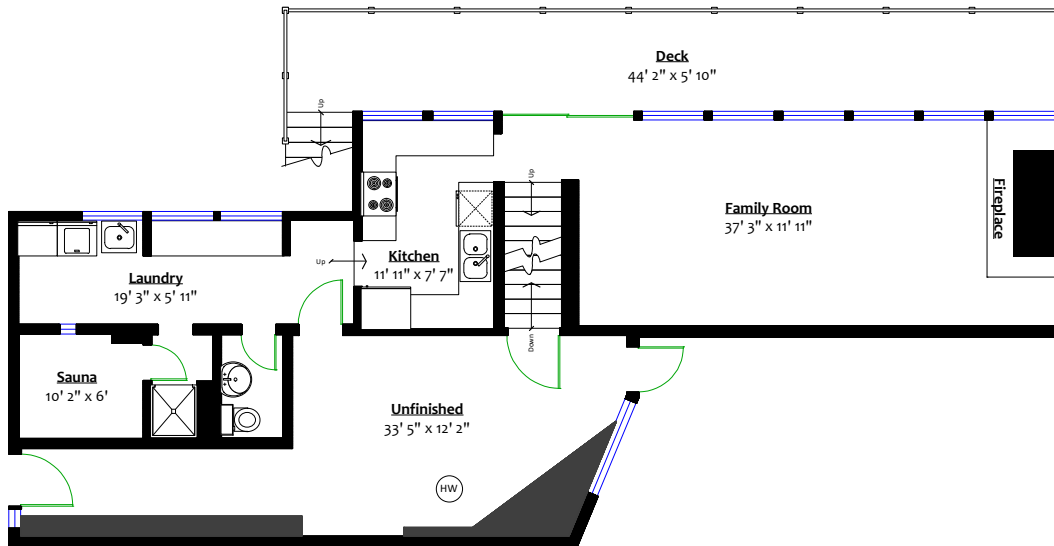
Main Level:	962 sq. ft.	Porch:	307 sq. ft.
Upper Level:	347 sq. ft.	Deck:	185 sq. ft.
Lower Level:	767 sq. ft.	Lower Deck:	256 sq. ft.
Bottom Level:	24 sq. ft.	Total:	748 sq. ft.
Total:	2,100 sq. ft.		
Lower Unfin.:	315 sq. ft.		
Bottom Unfin.:	654 sq. ft.		
Total:	3,069 sq. ft.		



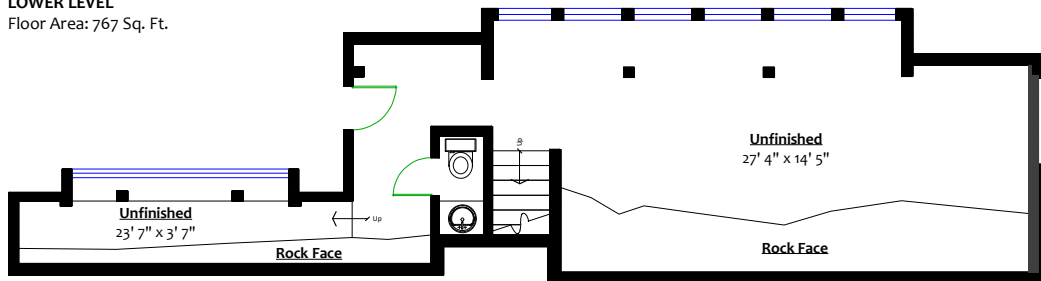
UPPER LEVEL
Floor Area: 347 Sq. Ft.



MAIN LEVEL
Floor Area: 962 Sq. Ft.



LOWER LEVEL
Floor Area: 767 Sq. Ft.



BOTTOM LEVEL
Floor Area: 24 Sq. Ft.

