



Frances Frost

REALTOR®



2016/17/19/20

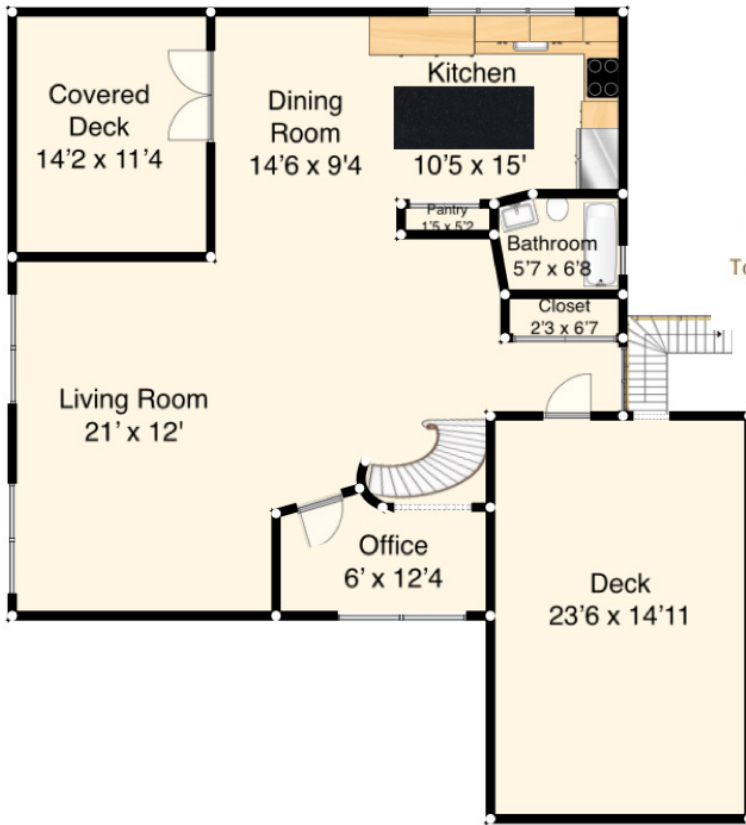
Remax Crest - Bowen Island

Office : 604.947.9090

Cell : 604.657.0660

www.bowenislandrealestate.info

Top 10% of Realtors in the GVRD



**1379 Mount Gardner Road
Bowen Island**

Upper Floor: 975 sq.ft.

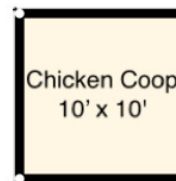
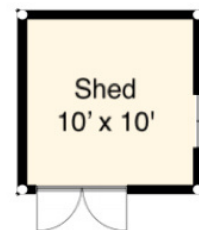
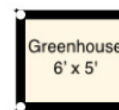
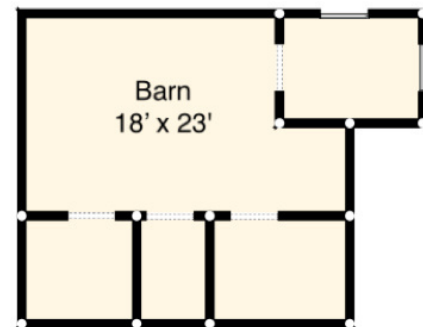
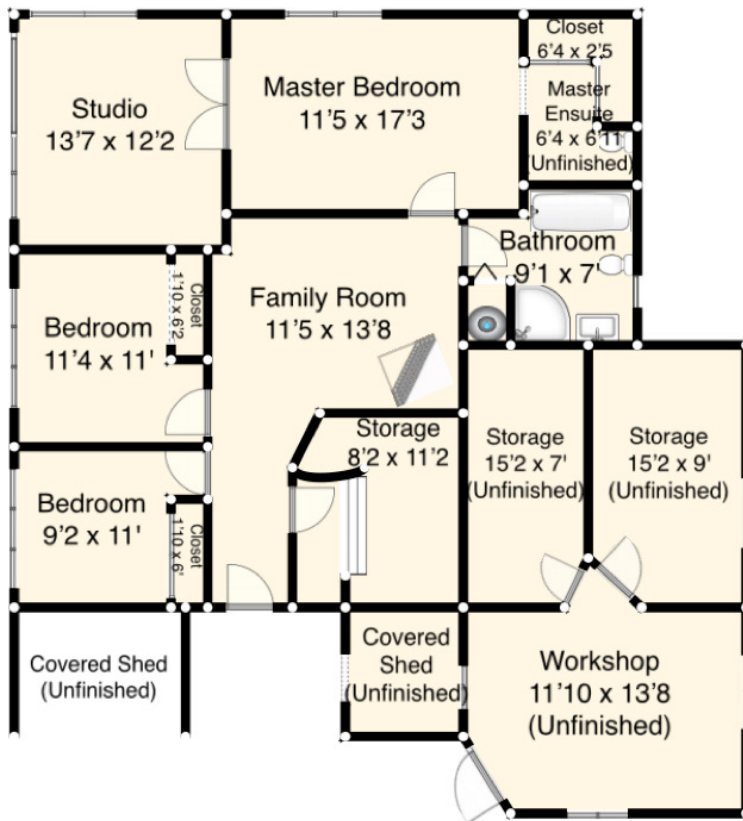
Lower Floor: 1047 sq.ft.

Total Interior: 2022 sq.ft.

Workshop/Storage: 429 sq.ft.
(Unfinished)

Decks: 510 sq.ft.

Out Buildings: 555 sq.ft.



FLOOR PLAN MEASUREMENTS, DIMENSIONS, SQUARE FOOTAGE, EXISTING STRUCTURES & FEATURES ARE APPROXIMATIONS AND FOR ILLUSTRATIVE PURPOSES ONLY. WE MAKE NO GUARANTEE, EXPRESSED OR IMPLIED, AS TO THE ACCURACY AND COMPLETENESS OF THIS RENDERING.