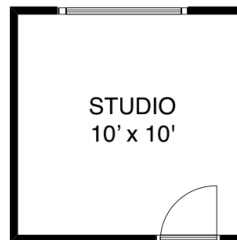


MAIN HOUSE



SUITE



STUDIO



Frances Frost
 Personal Real Estate Corporation
 604.657.0660
 RE/MAX Crest Realty - Bowen Island
 #3 - 479 Bowen Trunk Rd. V0N 1G1
 www.bowenislandrealestate.info

ADDRESS

**1308 CHEVY CHASE LANE
 BOWEN ISLAND
 V0N 1G1**

AREA CALCULATION

MAIN HOUSE	1145 sq ft
UNFINISHED CRAWLSPACE	790 sq ft
DECK	294 sq ft
DECK	110 sq ft
STUDIO	160 sq ft
OFFICE	100 sq ft

NOTES

FLOOR PLAN MEASUREMENTS, DIMENSIONS, SQUARE FOOTAGE, EXISTING STRUCTURES & FEATURES ARE APPROXIMATIONS AND FOR ILLUSTRATIVE PURPOSES ONLY. WE MAKE NO GUARANTEE, EXPRESSED OR IMPLIED, AS TO THE ACCURACY AND COMPLETENESS OF THIS RENDERING.