

# 1262 MILLER ROAD

MAIN FLOOR: 1177 SQ.FT.

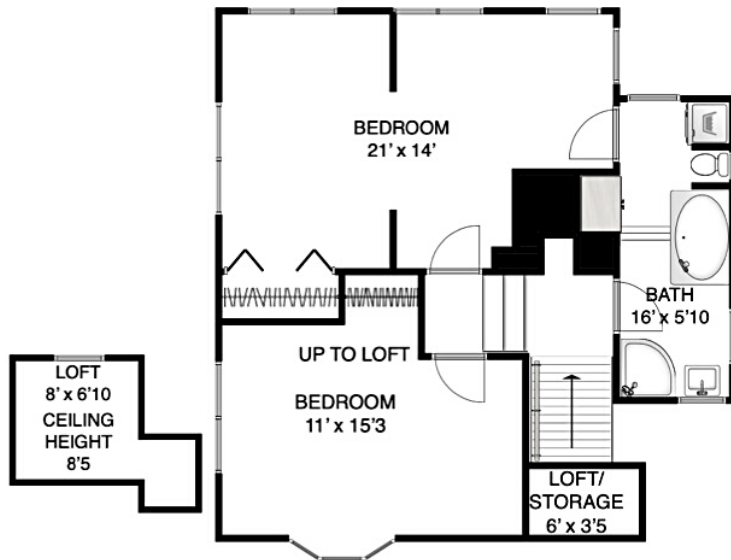
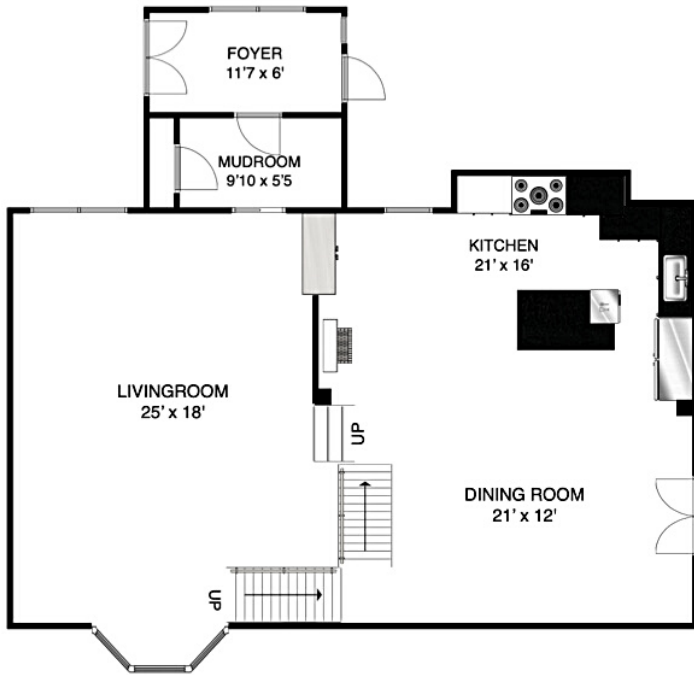
TOP FLOOR: 663 SQ.FT.

---

**TOTAL INTERIOR: 1840 SQ.FT.**

WORKSHOP: 507 SQ.FT.

GUEST HOUSE: 160 SQ.FT.



FLOOR PLAN MEASUREMENTS, DIMENSIONS, SQUARE FOOTAGE, EXISTING STRUCTURES & FEATURES ARE APPROXIMATIONS AND FOR ILLUSTRATIVE PURPOSES ONLY. WE MAKE NO GUARANTEE, EXPRESSED OR IMPLIED, AS TO THE ACCURACY AND COMPLETENESS OF THIS RENDERING.



Top 10% of Realtors in the GVRD

Frances  
Frost

REALTOR®



2016/17/19/20

Remax Crest - Bowen Island

Office : 604.947.9090

Cell : 604.657.0660

[www.bowenislandrealestate.info](http://www.bowenislandrealestate.info)