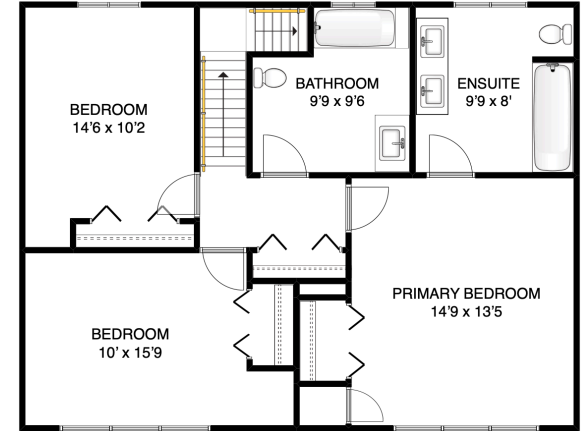
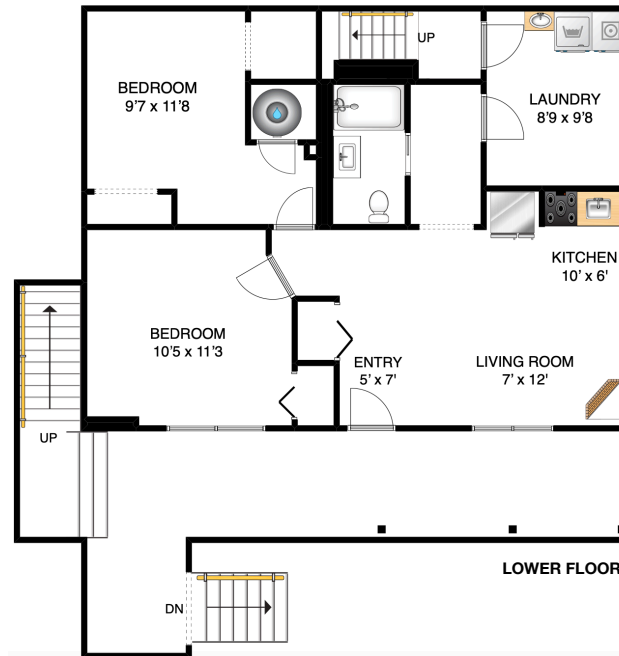




MAIN FLOOR



UPPER FLOOR



LOWER FLOOR



**FRANCES FROST**  
PERSONAL REAL ESTATE CORPORATION  
bowenislandrealestate.info  
604.947.9090  
#3 - 479 Bowen Trunk Rd.  
Bowen Island

**ADDRESS**  
**1213 ADAMS ROAD**  
**BOWEN ISLAND**  
**BC**  
**V0N 1G2**

**AREA CALCULATION**

MAIN FLOOR:	884 sq ft
UPPER FLOOR:	884 sq ft
LOWER FLOOR:	884 sq ft
<b>TOTAL FINISHED SQFT:</b>	<b>2652 sq ft</b>
MAIN FLOOR DECK:	820 sq ft
LOWER FLOOR DECK:	320 sq ft

**NOTES**

FLOOR PLAN MEASUREMENTS, DIMENSIONS, SQUARE FOOTAGE, EXISTING STRUCTURES & FEATURES ARE APPROXIMATIONS AND FOR ILLUSTRATIVE PURPOSES ONLY. WE MAKE NO GUARANTEE, EXPRESSED OR IMPLIED, AS TO THE ACCURACY AND COMPLETENESS OF THIS RENDERING.